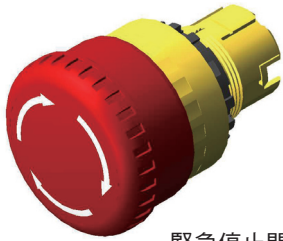
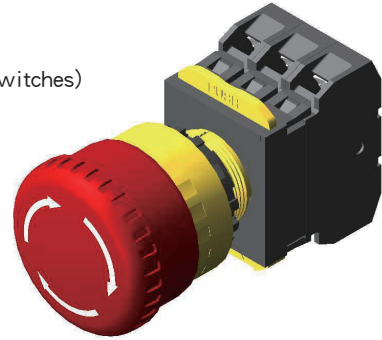


開關構造說明 (Switch Construction Instructions)

緊急停止開關 (Emergency Stop Switches)

A20B

緊急停止開關  
(Emergency Stop Switches)  
Page.18



緊急停止開關操作部  
(Emergency Stop Switches  
Operators)  
Page.63



開關接點部  
(Contact Block  
Assemblies)  
Page.106-117

接點塊安裝轉接器  
(Contact Block  
Mounting Adapter)  
Page.109



接點塊  
(Contact Block)  
Page.108



接點塊  
(Contact Block)  
Page.108

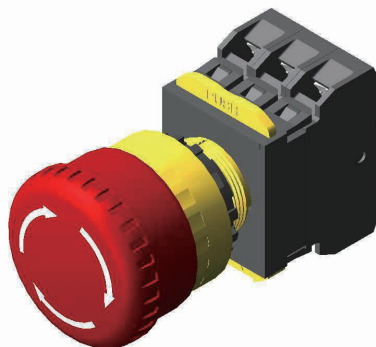


接點塊  
(Contact Block)  
Page.108

## 緊急停止開關 (Emergency Stop Switches)

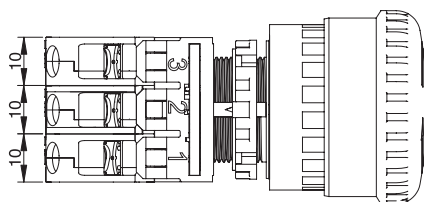
φ 40mm 蘑菇頭形 (Mushroom φ 40mm)

A20B



燈泡 (Illumination Type)	動作類型 (Operation)	接點結構 (Contacts)	型號 (Type No.)	使用電壓記號 (Operating Voltage Code)	顏色記號 (Lens Color Code)
無 (Without Lamp)	按鎖定拉出或 旋轉復歸 (Pushlock Pull/ Turn Reset)	1NC	A20B-V4E01R	無燈泡 (Without Lamp)	僅紅色 (Red only)
		2NC	A20B-V4E02R		
		3NC	A20B-V4E03R		
		1NO-1NC	A20B-V4E11R		
		1NO-2NC	A20B-V4E12R		
		2NO-1NC	A20B-V4E21R		

### ■ 外型尺寸 (Dimensions) mm



面板厚度 (Panel Thickness)  
0.8~6

