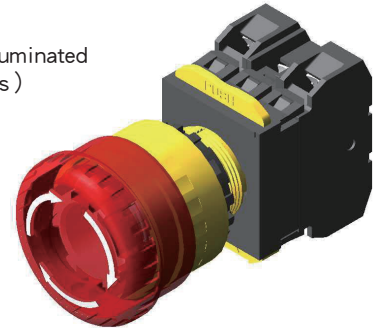


開關構造說明 (Switch Construction Instructions)

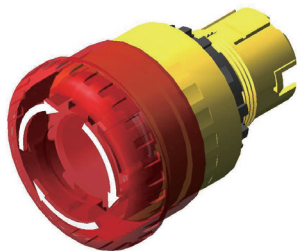
照光緊急停止開關 (Illuminated Emergency Stop Switches)

A20L

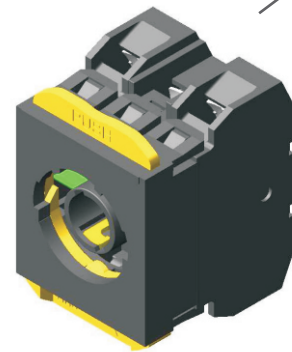
照光緊急停止開關 (Illuminated
Emergency Stop Switches)
Page.20



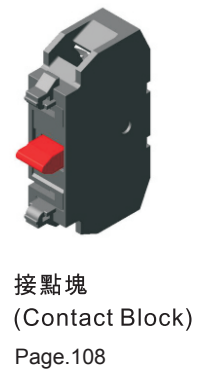
照光緊急停止開關操作部
(Illuminated Emergency Stop
Switches Operators)
Page.63



燈泡
(Lamp)
Page.110



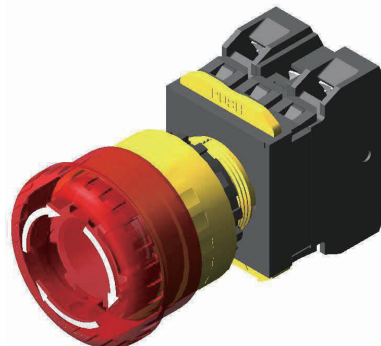
開關接點部
(Contact Block
Assemblies)
Page.106-107



照光緊急停止開關 (Illuminated Emergency Stop Switches)

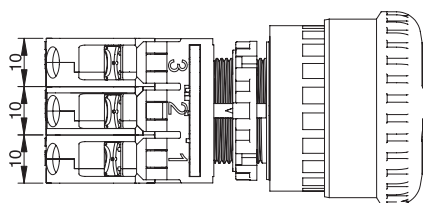
φ 40mm 蘑菇頭形 (Mushroom φ 40mm)

A20L



燈泡 (Illumination Type)	動作類型 (Operation)	接點結構 (Contacts)	型號 (Type No.)	使用電壓記號③ (Operating Voltage Code③)	顏色記號 (Lens Color Code)
無 (Without Lamp)	按鎖定拉出或 旋轉復歸(Push Lock Pull/Turn Reset)	1NC	A20L-V4E01Q0R	0 (無燈泡) (Without Lamp) 最大(max.) 250V AC/DC	僅紅色 (Red only)
		2NC	A20L-V4E02Q0R		
		1NO-1NC	A20L-V4E11Q0R		
LED		1NC	A20L-V4E01Q③R	2 (6V AC/DC) 3 (12V AC/DC) 4 (24V AC/DC) H (110V AC/DC) M3 (230/240V AC/DC)	
		2NC	A20L-V4E02Q③R		
		1NO-1NC	A20L-V4E11Q③R		
白熾燈泡 (Incandescent)		1NC	A20L-V4E01Q③R	5 (6V AC/DC) 6 (12V AC/DC) 7 (24V AC/DC)	
		2NC	A20L-V4E02Q③R		
		1NO-1NC	A20L-V4E11Q③R		

■外型尺寸(Dimensions) mm



面板厚度 (Panel Thickness)
0.8~6

