

# MB910 PCB Terminal Block, Modular



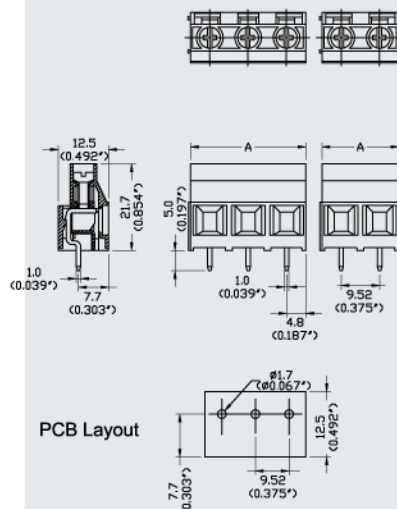
## Dimensions/Positions

## MB910-952M

間距	Pitch	9.52mm
尺寸a	Dimension a	9.52mm
長度 A	Length	A= 9.52xP(P≥2)
塑膠本體	Housing Material	PA 66
壓線圈	Cage Clamp	Steel, Ni Plated
端子	Contact	Brass, Tin Plated
螺紋	Screw Thread	M3, Steel, Zinc Plated
電線線徑	Wire Size	10 ~ 24AWG
PCB孔徑	PCB Hole Diameter	1.7mm
最大緊固扭距	Tightening Torque, Max.	9.0 Lb-in
環境作業溫度	Operating Temperature	-40°C to +105°C

## TECHNICAL DATA

絕緣材料組	Insulating Material group	I
額定電涌電壓(III/3)	Rated surge voltage (III/3)	5 kV
額定電涌電壓(II/2)	Rated surge voltage (II/2)	5 kV
額定電壓(III/3)	Rated voltage(III/3)	250V
額定電壓(II/2)	Rated voltage(II/2)	500V
連接符合標準	Connection in acc. with standard EN-VDE	
額定電流 $I_N$	Nominal Current $I_N$	16A
額定橫截面	Nominal Cross Section	0.2 ~ 1.5mm <sup>2</sup>
最大負載電流	Maximum load current	16A
絕緣材料	Insulating Material	PA
阻燃等級, 符合UL94	Inflammability class acc. to UL94	V0
額定電壓, UL/CUL標準B組	Nominal voltage, UL/CUL Use Group B	300V
額定電流, UL/CUL標準B組	Nominal current, UL/CUL Use Group B	30A
額定電壓, UL/CUL標準D組	Nominal voltage, UL/CUL Use Group D	600V
額定電流, UL/CUL標準D組	Nominal current, UL/CUL Use Group D	10A



Note:  
 Screw Plating: Changes are available upon request  
 Cage Clamp: MB912: Brass