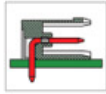


Pitch: 5.00mm(0.197inch)

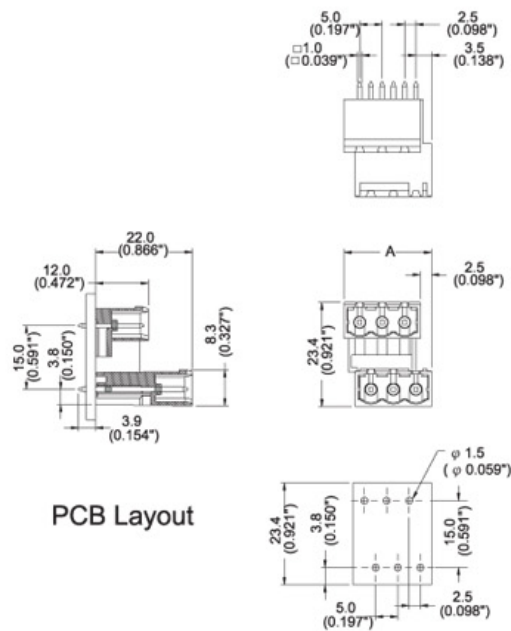


### SPECIFICATIONS

			CUL	VDE
負載電壓	Rated Voltage	Bemessungsspannung	AC 300V	AC 250V
負載電流	Rated Current	Bemessungsstrom	16A	12A
塑膠本體	Housing Material	Isolierstofftyp	Polyamide66(UL94V-0)	
焊針	Solder Pin	Lötstift	□1.0mm, Brass, Tin plated	
操作溫度	Operating Temperature	Umgebungstemperatur	-40°C to + 105°C	
PC板孔徑	PCB Hole Diameter	Lochdurchmesser	φ1.5mm	

TABLE

Item No.	A(mm)	A(inch)
ME140-50004	14.5	0.571
ME140-50006	19.5	0.768
ME140-50008	21.5	0.965
ME140-50010	26.5	1.161
ME140-50012	31.5	1.358
ME140-50014	36.5	1.555
ME140-50016	41.5	1.752
ME140-50018	46.5	1.949
ME140-50020	51.5	2.146
ME140-50022	56.5	2.343
ME140-50024	61.5	2.539
ME140-50026	66.5	2.618
ME140-50028	71.5	2.815
ME140-50030	76.5	3.012
ME140-50032	81.5	3.209
ME140-50034	86.5	3.406
ME140-50036	91.5	3.602
ME140-50038	96.5	3.799
ME140-50040	101.5	3.996
ME140-50042	106.5	4.193
ME140-50044	111.5	4.390
ME140-50046	116.5	4.587
ME140-50048	121.5	4.783



PCB Layout