

ME 14L-500M

Double level header-Modular



Pitch: 5.00mm(0.197inch)

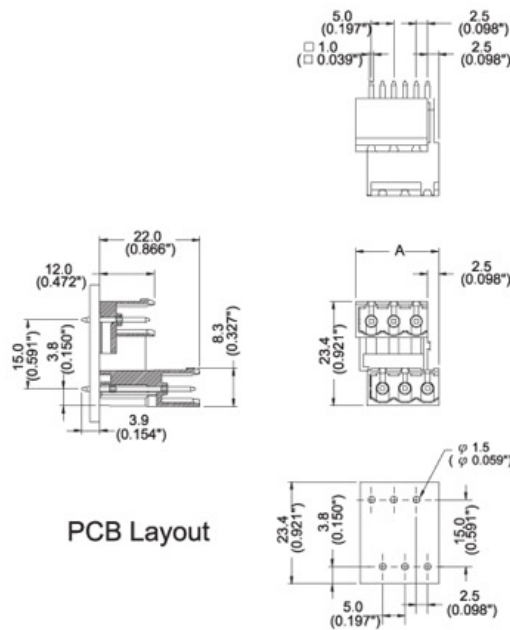


SPECIFICATIONS

			CUL	VDE
負載電壓	Rated Voltage	Bemessungsspannung	AC 300V	
負載電流	Rated Current	Bemessungsstrom	16A	
塑膠本體	Housing Material	Isolierstofftyp	Polyamide66(UL94V-0)	
焊針	Solder Pin	Lötstift	□1.0mm, Brass, Tin plated	
操作溫度	Operating Temperature	Umgebungstemperatur	-40°C to + 105°C	
PC板孔徑	PCB Hole Diameter	Lochdurchmesser	φ1.5mm	

TABLE

Item No.	A(mm)	A(inch)
ME14L-500M04	13.5	0.531
ME14L-500M06	18.5	0.728



PCB Layout