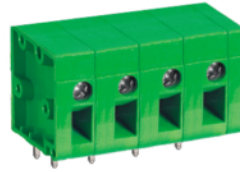


# MT300 PCB Terminal Block



## Dimensions/Positions

|        |                         | MT300-750                | MT300-762                |
|--------|-------------------------|--------------------------|--------------------------|
| 間距     | Pitch                   | 7.50mm                   | 7.62mm                   |
| 尺寸a    | Dimension a             | 7.50mm                   | 7.62mm                   |
| 長度 A   | Length                  | A = 7.50xP+2.50mm(P≥2)   | A = 7.62xP+2.50mm(P≥2)   |
| 塑膠本體   | Housing Material        | PBT                      | PBT                      |
| 翹板     | Pressure Plate          | Steel, Zinc Plated       | Steel, Zinc Plated       |
| 壓線圈    | Cage Clamp              | Steel, Zinc Plated       | Steel, Zinc Plated       |
| 端子     | Contact                 | Brass, Tin Plated        | Brass, Tin Plated        |
| 螺紋     | Screw Thread            | M2.6, Steel, Zinc Plated | M2.6, Steel, Zinc Plated |
| 電線線徑   | Wire Size               | 12 ~ 24AWG               | 12 ~ 24AWG               |
| PCB孔徑  | PCB Hole Diameter       | 1.5mm                    | 1.5mm                    |
| 最大緊固扭矩 | Tightening Torque, Max. | 4.5 Lb-in                | 4.5 Lb-in                |
| 環境作業溫度 | Operating Temperature   | -40°C to +120°C          | -40°C to +120°C          |

## TECHNICAL DATA

|                  |                                     |      |      |
|------------------|-------------------------------------|------|------|
| 絕緣材料組            | Insulating Material group           | I    | I    |
| 額定電涌電壓(III/3)    | Rated surge voltage (III/3)         | 4 kV | 4 kV |
| 額定電涌電壓(III/2)    | Rated surge voltage (III/2)         | 4 kV | 4 kV |
| 額定電涌電壓(II/2)     | Rated surge voltage (II/2)          | 4kV  | 4 kV |
| 額定電壓(III/2)      | Rated voltage(III/2)                | 320V | 320V |
| 額定電壓(II/2)       | Rated voltage(II/2)                 | 630V | 630V |
| 絕緣材料             | Insulating Material                 | PA   | PA   |
| 阻燃等級, 符合UL94     | Inflammability class acc. to UL94   | V0   | V0   |
| 額定電壓, UL/CUL標準B組 | Nominal voltage, UL/CUL Use Group B | 300V | 300V |
| 額定電流, UL/CUL標準B組 | Nominal current, UL/CUL Use Group B | 20A  | 20A  |
| 額定電壓, UL/CUL標準D組 | Nominal voltage, UL/CUL Use Group D | 300V | 300V |
| 額定電流, UL/CUL標準D組 | Nominal current, UL/CUL Use Group D | 10A  | 10A  |

