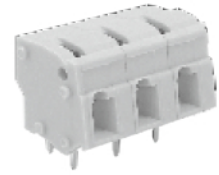
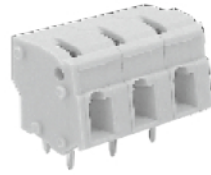


# MWX300 PCB Spring Type Terminal Block, with Lever



**Dimensions/Positions**

**MWX300-750**

**MWX300-762**

間距	Pitch	7.50mm	7.62mm
尺寸a	Dimension a	7.50mm	7.62mm
長度 A	Length	A= 7.50xP+2.90mm(P≥2)	A= 7.62xP+2.90mm(P≥2)
塑膠本體	Housing Material	PA 66	PA 66
彈片	Spring	Stainless Strip Steel	Stainless Strip Steel
端子	Contact	Brass, Tin Plated	Brass, Tin Plated
電線線徑	Wire Size	12 ~ 28AWG	12 ~ 28AWG
端蓋	Cover	PA 66	PA 66
PCB孔徑	PCB Hole Diameter	1.3mm	1.3mm
環境作業溫度	Operating Temperature	-40°C to +105°C	-40°C to +105°C

**TECHNICAL DATA**

絕緣材料組	Insulating Material group	I	I
額定電涌電壓(III/3)	Rated surge voltage (III/3)	6 kV	6 kV
額定電涌電壓(II/2)	Rated surge voltage (II/2)	6 kV	6 kV
額定電壓(III/3)	Rated voltage(III/3)	400V	400V
額定電壓(II/2)	Rated voltage(II/2)	1000V	1000V
連接符合標準	Connection in acc. with standard EN-TUV		
額定電流I <sub>N</sub>	Nominal Current I <sub>N</sub>	20A	20A
額定橫截面	Nominal Cross Section	4.0mm <sup>2</sup>	4.0mm <sup>2</sup>
最大負載電流	Maximum load current	20A	20A
絕緣材料	Insulating Material	PA	PA
阻燃等級, 符合UL94	Inflammability class acc. to UL94	V0	V0
額定電壓, UL/CUL標準B組	Nominal voltage, UL/CUL Use Group B	300V	300V
額定電流, UL/CUL標準B組	Nominal current, UL/CUL Use Group B	20A	20A
額定電壓, UL/CUL標準D組	Nominal voltage, UL/CUL Use Group D	300V	300V
額定電流, UL/CUL標準D組	Nominal current, UL/CUL Use Group D	10A	10A

